



FIBER OPTIC FLAME SCANNER
No liquid cooling required



VIBRATION MONITORING
24/7 Protection + Analysis



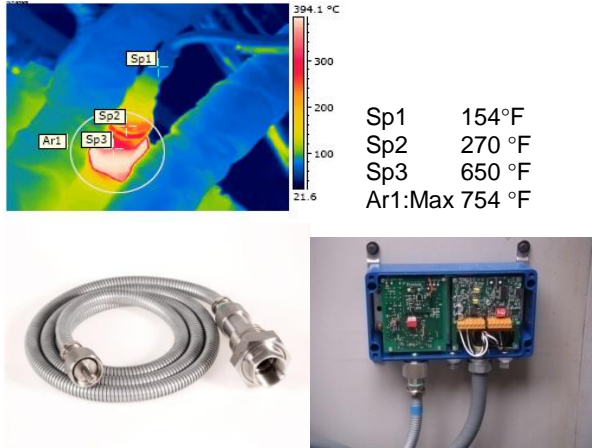
HEAT TRACING / PIPE MARKING



CUSTOM REUSABLE INSULATION

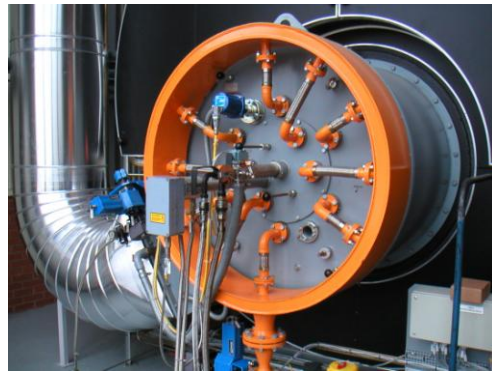
Flame Monitoring

FIBER OPTIC FLAME SCANNER



*No liquid cooling required
Drop-In Retrofit for any Gas Turbine*

COMPACT FLAME CONTROLLER



*Any burner application
Wires directly to control*



Vibration Monitoring



ACCELEROMETER SYSTEMS

*for rolling element bearings
Available with 4-20mA output
UNCONDITIONAL LIFETIME WARRANTY!*



PROXIMITY PROBE SYSTEMS

*for sleeve bearings
Bently 3300 interchangeable
CONDITIONAL LIFETIME WARRANTY*

Both provide 24/7 Protection Alarm to DCS and access for detailed analysis



Hot Caps

Electric Heat Tracing



Self-Regulating



Mineral Insulated



Tank Heat Mats



Reusable Insulation Covers



Custom Controls

*New design or replace old relay-based systems
Motor starter panels*

 *Allen-Bradley PLC programming*

On-site training and support



*Wireless Data Communication
Point-to-Point
Multi-Transmitter (up to 247)*

Compression Fittings



WHITEY CAJON NUPRO

Valves



<i>Ball</i>	<i>Butterfly</i>	<i>Check</i>
<i>Control</i>	<i>Gate</i>	<i>Globe</i>
<i>Knife Gate</i>	<i>Solenoid</i>	<i>Actuation</i>

Process Instruments



Pressure
Temperature
Level
Flow

ITT Neo-Dyn

Virtually any valve or process instrument. If you don't see it, please ask!

VALVE & INSTRUMENT *express*

SM

We accept

570 Morningside Drive
 Bridgewater NJ 08807 2337 USA
 P +1 908 450 7070
 F +1 908 450 7073
www.fourtotwenty.com

800 743 1433

Please see our website for term and conditions of sale. Manufacturer names and logos may be copyright or trademarked.